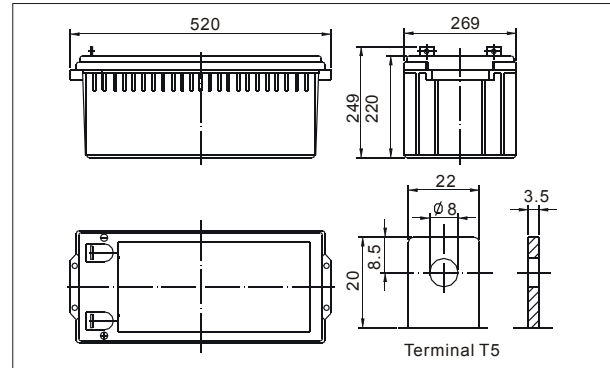


● Outer dimensions (mm)



TianChang sealed lead-acid rechargeable battery (VRLA battery) is leak-proof and maintenance free. The Superiority of VRLA battery is derived from its uniquely efficient oxygen recombination technology. The oxygen evolved from the positive plates diffuses through the micro porous glass fiber mat to the negative plates where it is changed back to water by recombination reaction, eliminating the need for water addition. The result is a maintenance free battery.

● Battery Construction

Component	Positive plate	Negative plate	Container	Cover	Safety valve	Terminal	Separator	Electrolyte
Raw material	Lead dioxide	Lead	ABS	ABS	Rubber	Copper	Fiberglass	Sulfuric acid

● General Features

- Absorbent Glass Mat (AGM) technology for efficient gas recombination of up to 99% and freedom from electrolyte maintenance or water adding.
- Not restricted for air transport-complies with IATA/ICAO Special Provision A67.
- UL-recognized component.
- Can be mounted in any orientation.
- Computer designed lead, calcium tin alloy grid for high power density.
- Long service life, float or cyclic applications.
- Maintenance-free operation.
- Low self discharge.

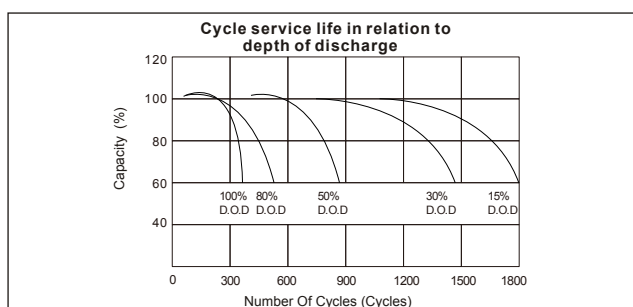
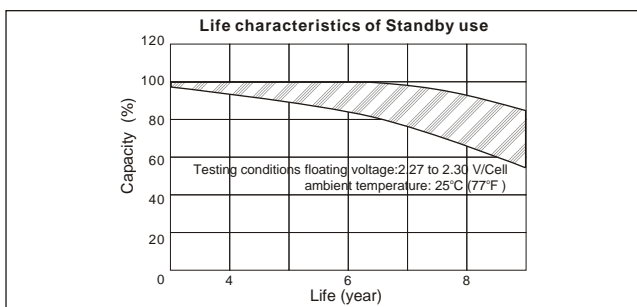
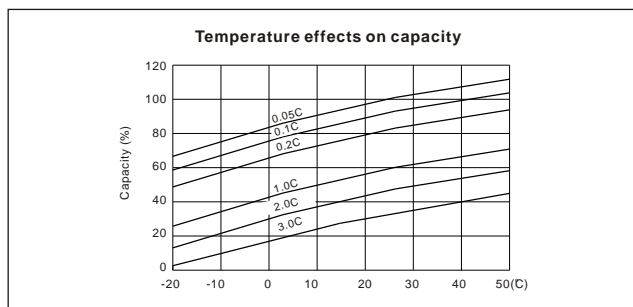
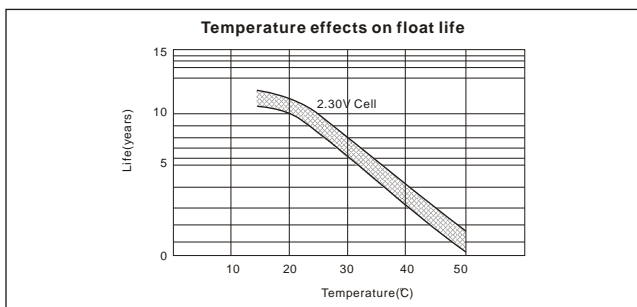
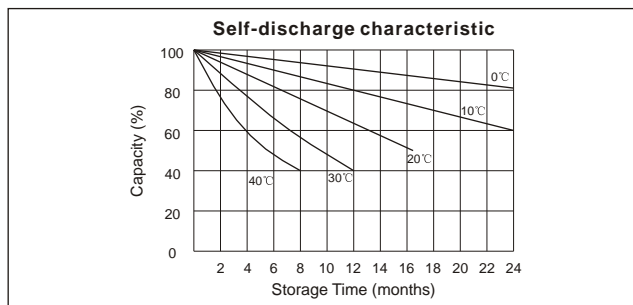
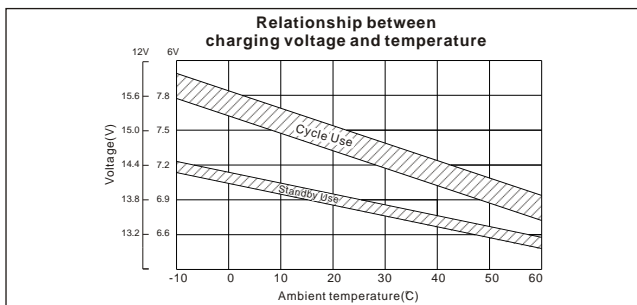
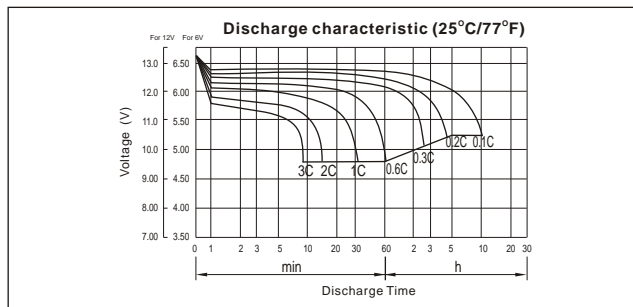
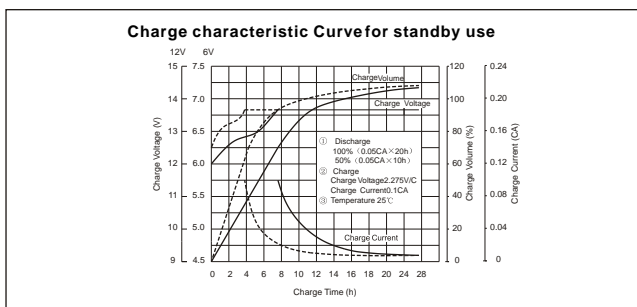
● Application

- Alarm System
- Medical Equipment
- Cable Television
- Control Equipment
- UPS
- Communication Equipment
- Toys
- Emergency power System
- Power Tools
- Security System

● Specifications

Nominal Voltage		12V
Capacity (10 hr 25°C)		260 Ah
Design Life		10 Years
Dimensions	Length	520 mm (20.47inch)
	Width	269 mm (10.59 inch)
	Height	220 mm (8.66 inch)
	Total Height	249 mm (9.80 inch)
Approx. Weight		74 Kg
Capacity 25°C (77°F)	10 hr rate	260A h
	3 hr rate	210A h
	1 hr rate	173.5 Ah
Internal Resistance (Full charged Battery at 25°C (77°F))		2.6m Ω

Capacity affected by Temperature (20hr)	40°C	102%
	25°C	100%
	0°C	85%
	-15°C	65%
Self-Discharge at 25°C	3 month	Remaining capacity: 91%
	6 month	Remaining capacity: 82%
	12 month	Remaining capacity: 65%
Normal operating temperature		25°C ±3°C (77°F ±5°F)
Operating temperature range		-15°C~50°C (5~122°F)
Float charging voltage (25°C)		13.60 to 13.80V
Cyclic charging voltage (25°C)		14.50 to 14.90V
Maximum charging current		75A
Terminal material		Copper
Maximum Discharge current		2000A (5sec)



Discharge Constant Current (Amperes at 77°F/25°C)

F.V/Time	5MIN	10MIN	15MIN	30MIN	1HR	2HR	3HR	4HR	5HR	8HR	10HR	20HR
9.60V	708.7	530.8	448.1	292.9	169.0	101.1	69.90	57.28	46.89	32.30	27.31	15.02
10.0V	688.2	505.1	438.9	288.1	168.2	100.4	69.63	57.02	46.61	32.03	27.05	14.75
10.2V	667.8	487.3	432.0	285.5	166.7	99.60	69.09	56.75	46.34	31.77	26.78	14.47
10.5V	599.6	449.6	411.3	278.4	165.1	98.84	68.82	56.22	45.78	31.51	26.52	14.20
10.8V	541.2	410.0	379.2	266.2	161.2	97.07	66.95	54.90	44.96	30.98	26.26	13.93
11.1V	462.1	366.4	340.1	249.4	153.1	92.76	64.00	52.24	43.03	29.67	25.47	13.11

Discharge Constant Power (Watts at 77°F/25°C)

F.V/Time	5MIN	10MIN	15MIN	30MIN	1HR	2HR	3HR	4HR	5HR	8HR	10HR	20HR
9.60V	7330	5653	4929	3339	1953	1192	831.8	682.8	559.4	385.6	326.3	180.1
10.0V	7185	5480	4850	3299	1948	1186	832.1	681.9	557.9	383.8	324.3	177.0
10.2V	7103	5335	4795	3275	1933	1178	828.4	680.5	556.0	381.3	321.4	173.7
10.5V	6467	4968	4574	3199	1916	1170	825.2	674.1	549.4	378.1	318.2	170.4
10.8V	5890	4580	4228	3066	1880	1155	802.7	658.8	539.5	371.8	315.1	167.1
11.1V	5173	4141	3806	2880	1800	1112	768.1	626.9	516.3	356.1	305.6	157.3

(Note) The above characteristics data are average values.