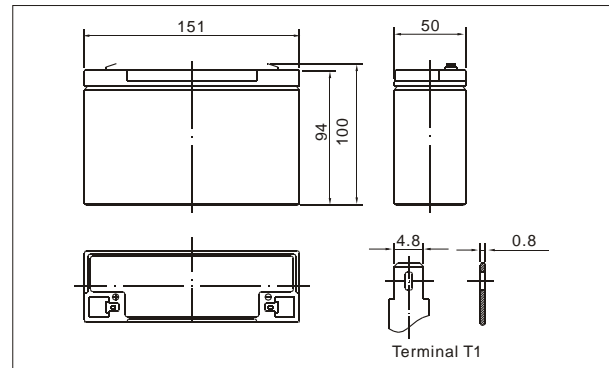


● **Outer dimensions (mm)**



TianChang sealed lead-acid rechargeable battery (VRLA battery) is leak-proof and maintenance free. The Superiority of VRLA battery is derived from its uniquely efficient oxygen recombination technology. The oxygen evolved from the positive plates diffuses through the micro porous glass fiber mat to the negative plates where it is changed back to water by recombination reaction, eliminating the need for water addition. The result is a maintenance free battery.

● **Battery Construction**

Component	Positive plate	Negative plate	Container	Cover	Safety valve	Terminal	Separator	Electrolyte
Raw material	Lead dioxide	Lead	ABS	ABS	Rubber	Copper	Fiberglass	Sulfuric acid

● **General Features**

- Absorbent Glass Mat (AGM) technology for efficient gas recombination of up to 99% and freedom from electrolyte maintenance or water adding.
- Not restricted for air transport-complies with IATA/ICAO Special Provision A67.
- UL-recognized component.
- Can be mounted in any orientation.
- Computer designed lead, calcium tin alloy grid for high power density.
- Long service life, float or cyclic applications.
- Maintenance-free operation.
- Low self discharge.

● **Application**

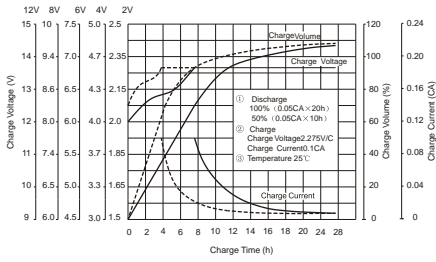
- Alarm System
- Medical Equipment
- Cable Television
- Control Equipment
- UPS
- Communication Equipment
- Toys
- Emergency power System
- Power Tools
- Security System

● **Specifications**

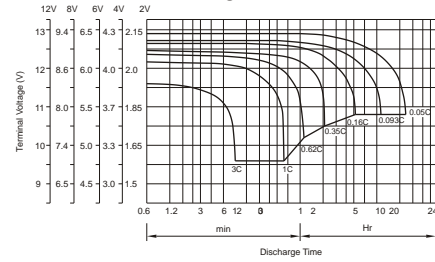
Nominal Voltage		6V
Capacity (20 hr 25°C)		10 Ah
Design Life		5 Years
Dimensions	Length	151mm (5.94 inch)
	Width	50mm (1.97 inch)
	Height	94 mm (3.70 inch)
	Total Height	100mm (3.94 inch)
Approx. Weight		1.65 Kg
Capacity 25°C (77°F)	20 hr rate	10Ah
	10 hr rate	9.3Ah
	5 hr rate	8.5Ah
	1 hr rate	6Ah
Internal Resistance (Full charged Battery at 25°C (77°F))		12m Ω

Capacity affected by Temperature (20hr)	40°C	102%
	25°C	100%
	0°C	85%
	-15°C	65%
Self-Discharge at 25°C	3 month	Remaining capacity: 91%
	6 month	Remaining capacity: 82%
	12 month	Remaining capacity: 65%
Normal operating temperature		25°C ± 3°C (77°F ± 5°F)
Operating temperature range		-15°C ~ 50°C (5 ~ 122°F)
Float charging voltage (25°C)		6.80 to 6.90V
Cyclic charging voltage (25°C)		7.25 to 7.45V
Maximum charging current		4.0A
Terminal material		Copper
Maximum Discharge current		150A (5sec)

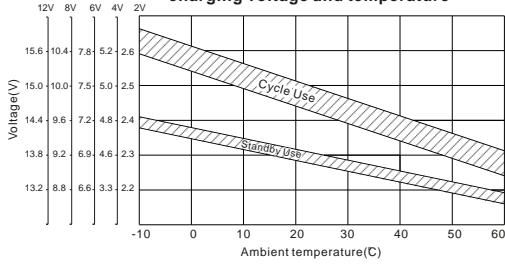
Charge characteristic Curve for standby use



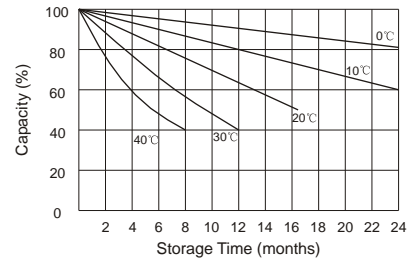
Discharge characteristic Curve



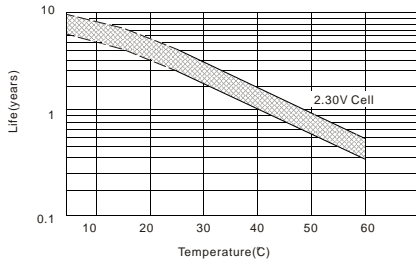
Relationship between charging voltage and temperature



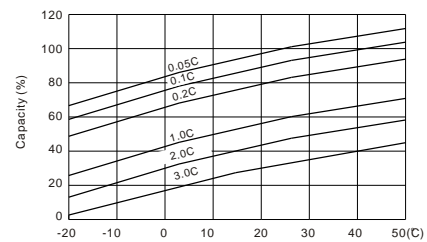
Self-discharge characteristic



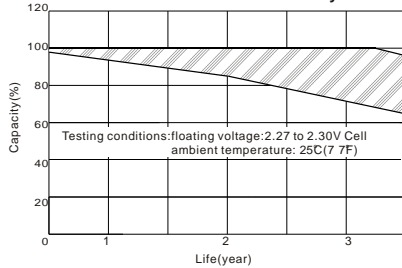
Temperature effects on float life



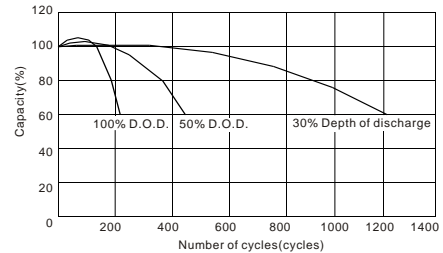
Temperature effects on capacity



Life characteristics of Standby use



Cycle service life in relation to depth of discharge



Constant current discharge ratings-amperes at 25

End Point Volts/Cell	5min	10min	15min	30min	1h	3h	5h	10h	20h
1.60V	38.6	27.2	20.8	11.5	6.74	2.84	1.79	1.01	0.518
1.65V	37.1	26.2	20.2	11.1	6.42	2.74	1.77	0.99	0.513
1.70V	34.9	25.2	19.7	10.7	6.11	2.65	1.74	0.97	0.507
1.75V	32.8	24.2	18.9	10.2	5.80	2.54	1.72	0.95	0.500
1.80V	30.6	23.1	18.3	9.80	5.68	2.42	1.69	0.93	0.491

Constant power discharge ratings-watts at 25

End Point Volts/Cell	5min	10min	15min	30min	1h	3h	5h	10h	20h
1.60V	71.4	50.3	38.7	21.5	12.7	5.36	3.40	1.94	0.99
1.65V	68.2	48.2	37.3	20.6	12.0	5.16	3.34	1.88	0.98
1.70V	63.9	46.1	36.2	19.7	11.4	4.96	3.27	1.83	0.96
1.75V	59.7	44.0	34.6	18.8	10.7	4.72	3.21	1.78	0.95
1.80V	55.1	41.7	33.2	17.8	10.4	4.46	3.12	1.72	0.92